

Summary of Catch up support Autumn Term 2021

Description

Catch up funding has been allocated to schools on a per pupil basis. Schools should use this funding for specific activities to support their pupils' education recovery in line with the curriculum expectations.

Schools can use their funding in a way that suits their cohort and circumstances. They are expected to use this funding for specific activities which will help pupils catch up on missed learning. Schools should particularly focus on disadvantaged and vulnerable pupils as we know they have been most affected.

LEAP Approach

At LEAP, we will follow three main areas in our approach to supporting children:

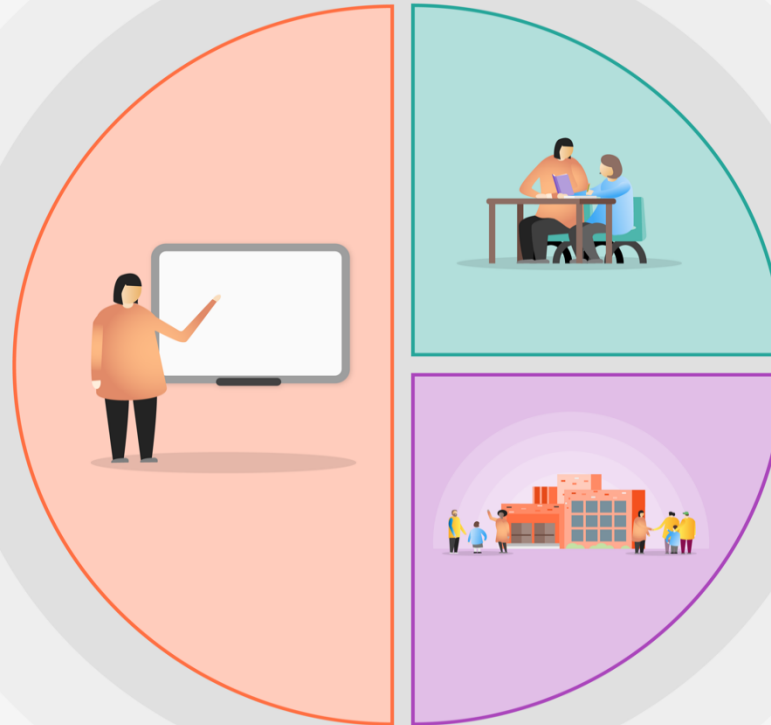
1. High-quality teaching
2. Targeted academic support
3. Wider strategies

Allocation of Funding

	Total	2020 - 21	2021 – 22
Kingsmead	£16,640	£9,710	£6,930

1 Teaching

- Quality First Teaching
- A broad and engaging curriculum
- Formative Assessment to inform planning and teaching
- Systematic approach to the teaching of Reading
- Wide opportunity for Writing
- Reasoning and application approach to embedding the key skills in Maths
- Evidence of the quality teaching of key skills across the curriculum



2 Targeted academic support

- Same- day in class intervention
- Teacher- led targeted group support
- Intervention programmes led by Teacher and Teaching Assistants

3 Wider strategies

- Extended school provision: Breakfast Clubs and sport after school
- Pastoral support: Learning Mentor intervention
- Attendance support
- Staff well-being committee

Support: Kingsmead

Focus		Description	Year groups	No. of children	Additional resource
Targeted academic support	Reading	DSR - class grouping	1 and 2	59	SLE, TA, CT, TLA & SLT
		Phonics – class grouping	1 and 2	59	SLT
		Phonics lunchtime support	2	8	SLT & SLE
		Group reading support	Y3	6	AM
		Peer Reading Programme	Y6	4	AM
		1:1 Reading comprehension	Y6	2	
		Split Y6 (15+15) 4 days a week	Y6	30	SLT (Additional teacher)
		HA Reading group	Y5	6	Interventions Teacher
		Academic mentor support for reading – x2 hours (booster sessions after school)	KS2	18	AM
Writing	Writing support group in class	Y6	4	SLT	
	Split Y6 (15+15) 3 days a week	Y6	30	SLT, CT, Additional TA, SLT	
	Academic mentor support for writing – x2 hours	KS2	18	AM	
Maths	Maths group – x2 hrs	Y2	12	SLT, CT, Additional TA, SLT, AM, Additional teacher	
	HA Maths group	Y4	6		
	HA Maths group	Y5	6		
	Split Y6 (15+15) 3 days a week	Y6	30		
	Academic mentor support for maths – 5 x 30 mins - 1:1 / paired	KS2	5	AM	
	Academic mentor support for maths (booster sessions after school)	KS2	18	AM	
Wider strategies	Physical	Structured Active Hour / After-school activities (x2 hours a week for each class)	Y1- Y6	All	TLA & TA
		Daily Mile	Rec - Y6	All	CT, TA
	Well - being	Neli – Speaking and Listening	N,R and Y1	18	SLE x2 & Interventions Teacher & TA
		Learning Mentor support	All	10	LM
		Kidznetwork mentoring	KS2	14	LM
Breakfast club	R-Y6	40+ (varied year groups)	TLA & AM		